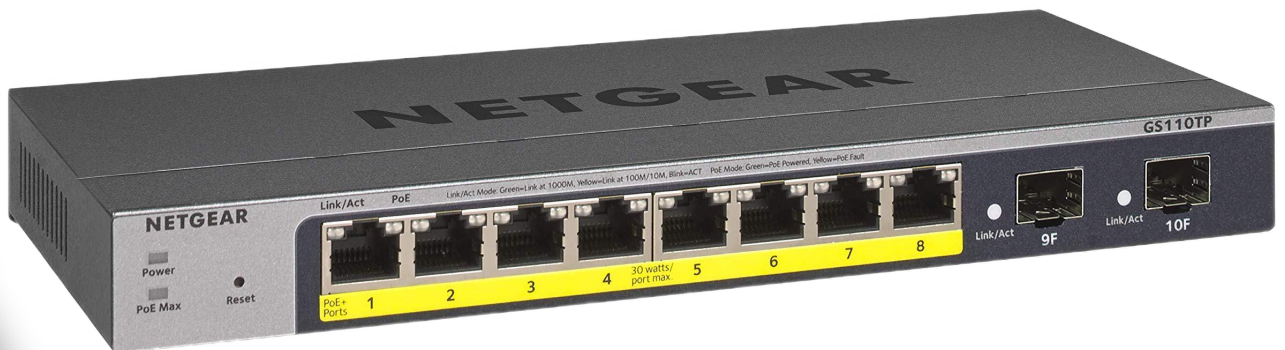


# 8-PORT GIGABIT POE SMART SWITCH WITH 2 GIGABIT FIBER SFP

Conectividad: Switch





### Small, Yet Powerful Gigabit Smart Switch Packed with Advanced Features

Joining the NETGEAR® family of Smart Switches with high performance and cost efficiency, this 10-port Gigabit Smart Switch is packed with powerful L2 features capable of enhancing any type of business network. The GS110TP is designed for customers who need a low port density solution with the combination of Gigabit speed and PoE capability. The GS110TP comes with 8 dedicated 10/100/1000 Mbps copper ports to connect to your end devices and two additional Gigabit Fiber ports for uplinks with greater distance. With PoE capability on all 8 copper ports, the GS110TP can automatically detect PoE on the end devices and dynamically

manage power assignments and priority. It is capable of delivering up to 15.4W of power per port, up to a maximum total of 46W across all connected PoE devices, and network connectivity concurrently across a single ethernet cable, to power devices such as wireless access points, IP phones and IP cameras, providing flexibility and ease of deployment to your network.

The GS110TP comes with a comprehensive set of features, such as enhanced VLAN and QoS, access control lists (ACL), 802.1x port authentication (MD5), rate limiting and IGMP snooping and many more, to provide businesses with networks that

are geared for growth while ensuring performance and reliability. Both an intuitive Web-browser GUI interface and Smart Control Center (Windows PC required), offer simple Smart Switch management, making it a snap to monitor switch performance, configure ports, even set up port trunks, VLANs, and traffic prioritization.

With the fanless design and compact form factor, the GS110TP offers quiet operation and is suitable for deployments in any type of environment, especially the ones which are sensitive to noise.

## Highlights

### PoE Power Management

GS110TP offers useful PoE power management features to help you better control and monitor your power resource. The PoE timer can help turn off the PoE ports during certain times of the day so that your network can be more secure as well as energy efficient. It can also set prioritization on power usage so that specified ports are always guaranteed to get the power first if total power required exceeds the total power budget. The power will be assigned to the PoE ports dynamically depending on the reported

power class from each of the individual network devices, allocating the required

### NETGEAR Green

Up to 70% power savings compared to the non-Green version

- Auto power-down mode saves energy when port is not in use

### Advanced Quality of Service (QoS)

Priority queuing ensures high-priority traffic gets delivered efficiently, even during congestion from high-traffic bursts. Companies implementing network telephony or video conferencing, for

example, need to be able to prioritize such voice and video traffic and other real-time applications over less latency-sensitive traffic to ensure reliability and quality. The ability to prioritize traffic ensures quality of latency-sensitive services and applications despite increasing traffic loads. The GS110TP provides an extensive set of QoS features:

- 802.1p-based prioritization
- Layer 3-based prioritization
- Rate limiting

## Highlights

### Advanced Security

The GS110TP provides more robust security. This includes:

- 802.1x for authentication (MD5)
- ACL filtering to permit or deny traffic based on MAC or IP addresses

### Usability Enhancements

The GS110TP is a powerful switch, yet very ease to manage. It comes with many usability enhancements to help customers fully utilize the features for a more optimized and secure network. For example, the Auto Voice VLAN and Auto

Video features will assist customers to easily set up VoIP or IP surveillance networks with a couple of simple steps. You don't need to be an IT professional to set up VoIP or IP surveillance. Security is critical for business networks. However, not everyone knows how to set up a secure network. The ACL Wizards on the GS110TP will guide even naïve users through the setup of access control and address filtering.

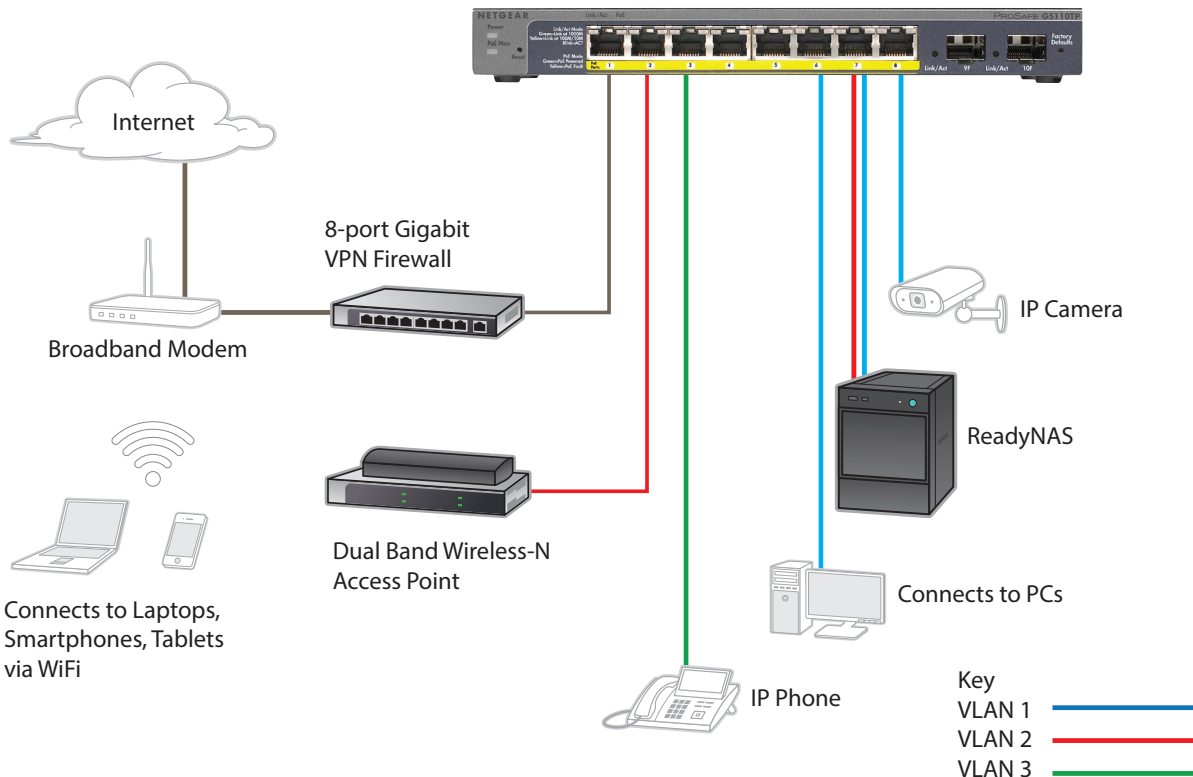
### Centralized Management via the New Smart Control Center

With multiple switches in the network, managing configurations on each switch

and upgrading firmware becomes a big challenge. The NETGEAR Smart Control Center that comes with the GS110TP and many other Smart switch models can help make this task much easier and simpler. It can perform discovery of the switches on your network, push configuration and firmware updates to multiple selected switches at once, and can even schedule when the tasks should be performed.



## Example Application



8-port Gigabit PoE Smart Switch  
with 2 Gigabit Fiber SFP

<b>Network Protocol and Standards Compatibility</b>		<b>GS110TP</b>
IEEE 802.3i 10BASE-T		Yes
IEEE 802.3u 100BASE-TX		Yes
IEEE 802.3ab 1000BASE-T		Yes
IEEE 802.3z 1000BASE-X		Yes
IEEE 802.3x full-duplex flow control		Yes
IEEE 802.3af (DTE Power Via MDI)		Yes
<b>Power Supply</b>		
Power consumption		59.3W maximum
<b>Network Ports</b>		
10/100/1000Mbps autosensing + 2 Gigabit SFP uplinks		Eight (8)
Front (port side) (per port)		Speed/Link/Activity (left), PoE Power (right)
<b>Physical Specifications</b>		
Dimensions (W x D x H)		236 x 101.6 x 27mm (9.3 x 4 x 1.07in)
Weight		0.7kg (1.55lb)
<b>Performance Specification</b>		
Forwarding modes		Store-and-forward
Bandwidth		20Gbps full duplex
Network latency		Less than 4 μs for 64-byte frames in store-and-forward mode for 1000Mbps to 1000Mbps transmission
Buffer memory		512KB embedded memory per unit
Address database size		4k media access control (MAC) addresses per system
Mean time between failures (MTBF):		157,004 hours (~18 years)
Acoustic noise		0 dB
<b>Electromagnetic Emissions</b>		
		CE mark, commercial FCC Part 15 Class B VCCI Class B C-Tick
<b>Environmental Specifications</b>		
<b>Operating</b>		
Operating Temperature		0° to 104° F (0° to 40° C)
Humidity		90% maximum relative humidity, non-condensing
Altitude		10,000ft (3,000m) maximum

8-port Gigabit PoE Smart Switch  
with 2 Gigabit Fiber SFP

<b>Environmental Specifications</b>		<b>GS110TP</b>
<b>Storage</b>		
Storage Temperature		-4° to 158°F (-20° to 70°C)
Humidity (relative)		95% maximum relative humidity, non-condensing
Altitude		10,000ft (3,000m) maximum
<b>Status LEDs</b>		
Per RJ45 port		Link/activity, speed, PoE status
Per SFP port		Link/speed
Per device		Power, PoE Max
<b>Power Adapter</b>		
External power adapter, localized to country of sale		48V, 1.25A
<b>Electromagnetic Immunity</b>		
		EN 55024
<b>Safety</b>		
		CE mark, commercial cUL IEC 950/EN 60950 CB
<b>Administrative Switch Management</b>		
IEEE 802.1Q static VLAN		64 groups, static
Protected ports		Yes
IEEE 802.1p Class of Service (CoS)		Yes
Port-based QoS		Yes
DSCP-based QoS		Yes
DiffServ		Yes
IEEE 802.3ad Link Aggregation (manual or LACP)		Yes
IEEE 802.1w Rapid Spanning Tree Protocol (RSTP)		Yes
IEEE 802.1s Multiple Spanning Trees Protocol (MSTP)		Yes
IEEE 802.1ab Link Layer Discovery Protocol (LLDP)		Yes
LLDP-MED		Yes
SNMP		v1, v2c, v3
RFC 1213 MIB II		Yes
RFC 1643 Ethernet Interface MIB		Yes
RFC 1493 Bridge MIB		Yes
RMON group		1, 2, 3, 9

8-port Gigabit PoE Smart Switch  
with 2 Gigabit Fiber SFP

Administrative Switch Management	GS110TP
Auto voice VLAN	Yes
DHCP Filtering	Yes
Auto denial-of-service (DoS) protection	Yes
HTTP and HTTPS	Yes
Ping and traceroute	Yes
Green features:	Power saving by cable length (<10 m)
Power saving when link down	Yes
RFC 2131 DHCP client	Yes
DHCP filtering	Yes
IEEE 802.1x (MD5) with Guest VLAN	Yes
Jumbo frame support	Yes
Port-based security by locked MAC addresses	Yes
MAC and IP-based ACL	Yes
Storm control for broadcast, multicast and unknown unicast packets	Yes
IGMP snooping	v1/v2
Port-based egress rate limiting	Yes
SNTP	Yes
Port mirroring support	(many-to-one)
Web-based configuration	Yes
Configuration backup/restore	Yes
Password access control	Yes
TACACS+ and RADIUS support	Yes
Syslog	Yes
Firmware upgradeable	
PoE	46 Watts of power budget

8-port Gigabit PoE Smart Switch  
with 2 Gigabit Fiber SFP

**Warranty and Support**

Hardware Limited Warranty	Limited Lifetime* Warranty
Next-Business-Day (NBD) Replacement	Limited Lifetime*
Technical support via phone	90 days (24/7)
24x7 Online Chat Technical support	Limited Lifetime* Warranty
ProSUPPORT OnCall 24x7 Service Packs**	PMB0311 (1 yr) PMB0331 (3 yrs) PMB0351 (5 yrs)

**Package Contents**

8-port Gigabit PoE Smart Switch with 2 Gigabit Fiber SFP (GS110TP)
AC adapter
Rubber footpads
Wallmount kit
Installation guide

**Ordering Information**

GS110TP-200AJS	Australia & Japan
GS110TP-200EUS	Europe General
GS110TP-200NAS	North America

\*This product comes with a limited warranty that is valid only if purchased from a NETGEAR authorized reseller, and covers unmodified hardware, fans and internal power supplies - not software or external power supplies, and requires product registration at <https://www.netgear.com/business/registration> within 90 days of purchase; see <https://www.netgear.com/about/warranty> for details. Intended for indoor use only.

\*\* The NETGEAR OnCall 24x7 contract provides unlimited phone and email technical support for your networking product. For products purchased prior to 06/2014, also includes next business-day hardware replacement.

† NETGEAR #1 in US Market Share according to NPD data for Unmanaged and Smart Switches, September 2019. NETGEAR #1 in Europe Market Share according to Context data for Unmanaged and Smart Switches, September 2019.

NETGEAR and the NETGEAR Logo are trademarks of NETGEAR, Inc. in the United States and/or other countries. Other brand names mentioned herein are for identification purposes only and may be trademarks of their respective holder(s). Information is subject to change without notice. ©NETGEAR, Inc. All Rights reserved.

NETGEAR, Inc. 350 E. Plumeria Drive, San Jose, CA 95134-1911 USA, 1-888-NETGEAR (638-4327), E-mail: [info@NETGEAR.com](mailto:info@NETGEAR.com), [www.NETGEAR.com](http://www.NETGEAR.com)



## Datos de Contacto

[ventas@telsa.com.mx](mailto:ventas@telsa.com.mx)

(55)5740-9258

(55)5740-2142

(55)5740-9322

(55)5740-2259