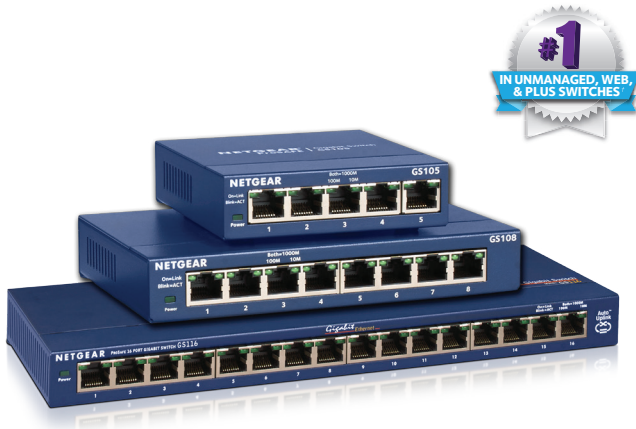


UNMANAGED SWITCHES

Conectividad: Switch



5-port, 8-port and 16-port Gigabit Ethernet Unmanaged Switches



Instant Connectivity with Reliable Performance

The NETGEAR[®] Gigabit Unmanaged Switch series helps businesses cost-effectively expand their network to Gigabit speeds and higher port counts.

The GS105v5, GS108v4, and GS116v2 Gigabit Ethernet switches come with 5, 8, and 16 Gigabit copper ports in a desktop metal case and are wall-mountable.

These switches are energy efficient, built to last, and rigorously tested to provide the reliability businesses need. 802.1p traffic prioritization and jumbo frame support allow for seamless integration with more sophisticated networks.

Highlights

Plug and Play

- The standards-based Gigabit switches sense and adjust for network speed and cabling type automatically. Easily integrate into your existing Ethernet network - no matter if it is running at 10/100Mbps or Gigabit speed
- Simple set up with no software or configuration needed
- Front panel LEDs keep you informed of power status, link speed and link activities

Traffic Prioritization

- Prioritize mission-critical applications such as voice and video Support IEEE 802.1p and DSCP-based QoS for delivering data based on priority and type

High Quality and Reliable Performance

- Superior network performance at non-blocking rate delivers true Gigabit speed with no compromise
- Durable metal case and long product life (shown by MTBF numbers)

Energy Efficient

- GS105v5, GS108v4, and GS116v2 support the latest Energy Efficient Ethernet (IEEE 802.3az) standard, which reduces energy consumption when there is light traffic on an active port or when there is no link or no activity detected. It can further save energy when a short cable (<100m) is used. Energy savings lead directly to cost savings in operation.
- Silent, fanless design for energy efficiency and noise-sensitive environments

Supports all Types of Networks

- Each port delivers up to 2000Mbps of network speed (full duplex)
- Supports jumbo frames up to 9K packets size on GS105v5 and GS116v2, up to 9,270 bytes on GS108v4
- Honors TOS/802.1p prioritization

Limited Lifetime* Warranty

- Industry's leading limited lifetime* warranty, not only on hardware but also includes lifetime online support as well as next-business day (NBD) replacement support, providing customers peace-of-mind using NETGEAR switches in their network.

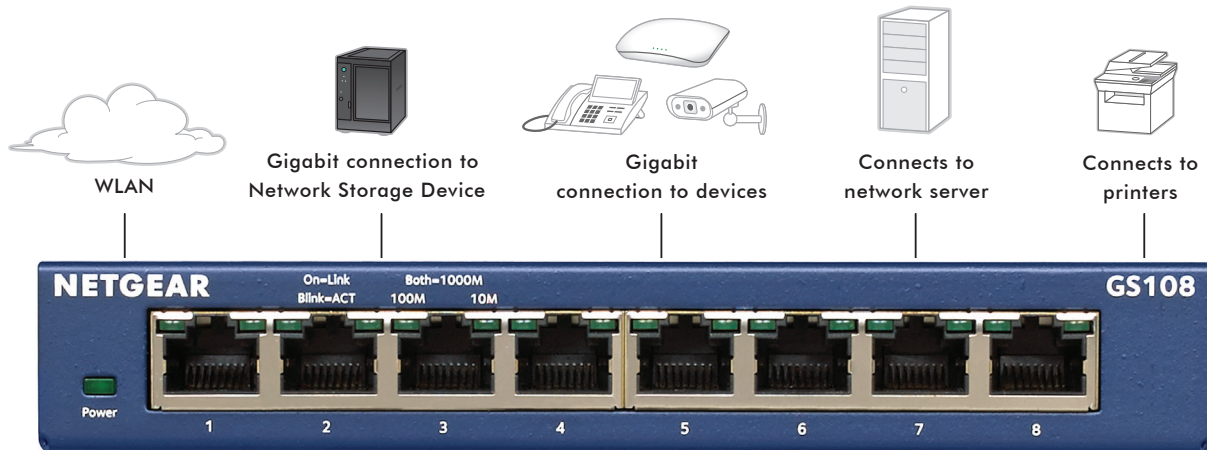


Hardware at a Glance

		FRONT	REAR
Model Name	Form-Factor	10/100/1000 Base-T RJ45 ports	Power Supply
GS105	Desktop, Wall mount	5	External Power Adapter, 12V DC, 0.5A (6W)
GS108	Desktop, Wall mount	8	External Power Adapter, 12V DC, 0.5A (6W)
GS116	Desktop, Wall mount	16	External Power Adapter, 12V DC, 1A (12W)

Example Application

SOHO Network Application



Why the NETGEAR Gigabit Ethernet Switch is ideal for SOHO Networks

- Superior Performance
- High Quality and Reliability
- Prioritize voice and video traffic
- Compact form-factor
- Fanless, silent and energy-efficient operation
- Lifetime Warranty* plus lifetime online support and lifetime Next Business Day (NBD) replacement

Technical Specifications

Product Specifications	GS105v5	GS108v4	GS116v2
Gigabit ports	5	8	16
Max MAC entries	2K	4K	8K
Buffer size	128KB	192KB	256KB
Energy Efficient Ethernet (IEEE 802.3az compliant)	Yes	Yes	Yes
Performance Specification			
Forwarding modes	Store-and-forward	Store-and-forward	Store-and-forward
Bandwidth	10 Gbps	16 Gbps	32 Gbps
Jumbo frame support	Up to 9K packet size	Up to 9K packet size	Up to 9K packet size
Acoustic noise (ANSI-S10.12)	0 dBA (fanless)	0 dBA (fanless)	0 dBA (fanless)
Mean Time Between Failures (MTBF)	3,197,945 hrs (52 yrs)	9,727,733 hrs (158 yrs)	554,582 hrs (9 yrs)
Network latency (64 bytes) <i>New</i>	1000Mbps-> 1000Mbps: <2.6us 100Mbps-> 100Mbps: <4.5us 10Mbps-> 10Mbps: <30.0us	1000Mbps-> 1000Mbps: <1.6us 100Mbps-> 100Mbps: <4.9us 10Mbps-> 10Mbps: <18.8us	1000Mbps-> 1000Mbps: <1.6us 100Mbps-> 100Mbps: <4.9us 10Mbps-> 10Mbps: <18.8us
Quality of Service (QoS)			
Max Power Consumption (W)	2.7W	4.9W	9.5W
DSCP	Yes	Yes	Yes
IEEE 802.1p COS	Yes	Yes	Yes
Queue WRR Ratio	1:2:4:8	1:2:4:8	1:2:4:8
IEEE Network Protocols			
IEEE 802.3 Ethernet		IEEE 802.1p Class of Service	
IEEE 802.3ab 1000BASE-T		IEEE 802.3x full-duplex flow control	
IEEE 802.3I 10BASE-T Ethernet <i>New</i>		Yes	
IEEE 802.3U 100BASE-TX <i>New</i>		Yes	
Miscellaneous Features			
IEEE 802.3az (Energy Efficient Ethernet)	Yes	Yes	Yes
LEDs			
Per port	Speed, Link, Activity	Speed, Link, Activity	Speed, Link, Activity
Per device	Power Status	Power Status	Power Status
Physical Specifications			
Dimensions	94 x 100 x 27 mm (3.7 x 3.9 x 1.1 in)	158 x 102 x 27 mm (6.2 x 4.0 x 1.1 in)	286 x 100 x 27 mm (11.3 x 3.9 x 1.1 in)
Weight	0.26 kg (0.57 lb)	0.47 kg (1.04 lb)	0.9 kg (1.98 lb)

Technical Specifications

Environmental Specifications	GS105v5	GS108v4	GS116v2
Operating			
Operating Temperature (Switch)	32° to 122°F (0° to 50°C)	32° to 122°F (0° to 50°C)	32° to 122°F (0° to 50°C)
Operating Temperature (Adapter)	32° to 104°F (0° to 40°C)	32° to 104°F (0° to 40°C)	32° to 104°F (0° to 40°C)
Humidity	90% maximum relative humidity, non-condensing		
Altitude	10,000 ft (3,000 m) maximum		
Storage			
Storage Temperature	- 4° to 158°F (-20° to 70°C)		
Humidity	95% maximum relative humidity, non-condensing		
Altitude	10,000 ft (3,000 m) maximum		
Electromagnetic Emissions and Immunity			
Certifications Class	B (CE, FCC Part 15, ICES-003, VCCI, RCM, CCC)	B (CE, FCC Part 15, ICES-003, VCCI, RCM, BSMI)	A (CE, FCC Part 15, ICES-003, VCCI, RCM, VCCI, KC, CCC)
Safety			
Certifications	CB, CCC EN 60950-1	CE LVD EN 60950-1	CB, CE LVD, CCC EN 60950-1
Warranty and Support*			
Hardware Warranty	Limited lifetime* on switch and 2-year on power adapter		
Live Chat Support	Limited lifetime*		
Next Business Day Replacement	Limited lifetime*		
ProSUPPORT OnCall 24x7 Service Plans	PMB0S11 (1 yr) PMB0S31 (3 yrs) PMB0S51 (5 yrs)	PMB0S11 (1 yr) PMB0S31 (3 yrs) PMB0S51 (5 yrs)	PMB0S12 (1 yr) PMB0S32 (3 yrs) PMB0S52 (5 yrs)
Package Content			
All models	Gigabit Ethernet Switch Power adapter (localized to country of sale) Wall mount kit and rubber feet Installation Guide		

Ordering Information

GS105NA	North America and Latin America
GS105GE	Europe
GS105AU	Australia
GS105UK	United Kingdom
GS105-500JPS	Japan
GS108-400NAS	North America and Latin America
GS108GE	Europe
GS108AU	Australia
GS108UK	United Kingdom
GS108-400JPS	Japan
GS116NA	North America and Latin America
GS116GE	Europe
GS116AU	Australia
GS116UK	United Kingdom
GS116-200JPS	Japan

* This product comes with a limited warranty that is valid only if purchased from a NETGEAR authorized reseller, and covers unmodified hardware, fans and internal power supplies - not software or external power supplies, and requires product registration at <https://www.netgear.com/business/registration> within 90 days of purchase; see <https://www.netgear.com/about/warranty> for details. Intended for indoor use only.

NETGEAR, the NETGEAR Logo, and NETGEAR Insight are trademarks of NETGEAR, Inc. in the United States and/or other countries. Other brand names mentioned herein are for identification purposes only and may be trademarks of their respective holder(s).

NETGEAR, Inc. 350 E. Plumeria Drive, San Jose, CA 95134-1911 USA, 1-888-NETGEAR (638-4327), E-mail: info@NETGEAR.com, www.NETGEAR.com

DS-GS105/GS108/GS116-20Oct21



Datos de Contacto

ventas@telsa.com.mx

(55)5740-9258

(55)5740-2142

(55)5740-9322

(55)5740-2259